

# ADDENDUM NO. 1

## COVER LETTER

May 7, 2026

### Clermont County Parks – Grailville Park and Preserve Phase

1

Loveland, Ohio

To: All Plan Holders

The following addendum items supplement, clarify, modify, change, replace, delete from or add to, the requirements of the contract documents for this project. The articles contained in the addendum take precedence over the requirements of the previously published contract documents. Where any article of the contract specifications or any detail of the contract drawings is modified or any paragraph, subparagraph or clause thereof is modified or deleted by the articles contained in this addendum, the unaltered provisions of that, paragraph, subparagraph or clause shall remain in effect.

Addendum is a total of 13 pages including this 2-page cover letter.

#### CONTENTS:

1. Contractors that attended Pre-Bid Meeting
2. Plan Revisions
3. Specification Revisions
4. Revised Bid Items List

Prepared by:

David Griffith

Burgess and Niple, Inc.

Project Manager

525 Vine Street, Suite 1300

Cincinnati, OH 45202



PLOTTED: 3/11/2026 10:40:43 AM  
p:\PR63329\06 CAD\Sheets\Z\_BNSheet-C-000.dwt 3/11/2026 10:39:48 AM Darren Curtis

# SHEET L-102

# SHEET L-103

# SHEET L-104

# SHEET L-105

# SHEET L-106

## KEY NOTES [SEE ENLARGED PLANS]

- NEW WOODEN OBSTACLE COURSE, KOMPAN PARKOUR 4 BASIS OF DESIGN. ROUND TIMBER POSTS & BEAMS OBSTACLE COURSE, PRESSURE-TREATED. PROVIDE ROPE, NET, & HANGING ELEMENTS USING UV-RESISTANT SYNTHETIC ROPE, SECURELY FASTENED TO TIMBER MEMBERS W/ CONCEALED OR RECESSED HARDWARE. ANCHOR ALL PRIMARY VERTICAL POSTS BELOW FROST DEPTH; PROVIDE BRACING AS REQUIRED FOR LATERAL STABILITY. FIELD-ADJUST SPACING & CONFIGURATION AS NEEDED TO MAINTAIN OVERALL INTENT WHILE MEETING SAFETY CLEARANCES & CONSTRUCTABILITY.
- NEW LOG PYRAMID, KOMPAN LOG PYRAMID (CRAWLING PYRAMID) BOD. ROUND TIMBER EDGING LOGS, 7 FT LONG, PRESSURE-TREATED OR NATURALLY DURABLE WOOD. INSTALL LOGS PARTIALLY BURIED OR PINNED TO SUBGRADE TO PREVENT MOVEMENT; PROVIDE CONCEALED STAKES OR REBAR ANCHORS AS REQUIRED.
- 10' LONG EMBANKMENT SLIDE CONSTRUCTED OF STAINLESS STEEL OR GALVANIZED STEEL SLIDE SURFACE W/ INTEGRATED SIDE RAILS. SLIDE TO BE SET INTO COMPACTED EARTH EMBANKMENT SHAPED TO SUPPORT FULL UNDERSIDE OF SLIDE. ANCHOR SLIDE AT TOP & BOTTOM PER TYPICAL PLAYGROUND CONSTRUCTION STANDARDS; COORDINATE W/ GRADING FOR SMOOTH TRANSITIONS. FINISHED GRADES AT SLIDE ENTRY & EXIT TO BE FLUSH, STABLE, & FREE OF TRIP HAZARDS.
- HOLLOW LOG TUNNEL, NATURAL PLAYGROUNDS HOLLOW LOG BOD. REFER TO MANUFACTURER'S INSTALLATION & BRACING INSTRUCTIONS. NATURAL BARK EXTERIOR, SMOOTH-FINISHED INTERIOR; REMOVE SPLINTERS & SHARP EDGES PRIOR TO INSTALLATION.
- BALANCE POSTS W/ ROPE & ~~TIMBER STILTS~~ KOMPAN NRO821 & NRO800 BOD. ~~NRO806 REMOVED FROM SCOPE~~
- EMBANKMENT CLIMBING NET, CALEDONIA PLAY BASIS OF DESIGN. PROVIDE INCLINED CLIMBING NET INSTALLED ON EARTH EMBANKMENT, CONSISTING OF UV-RESISTANT SYNTHETIC ROPE ARRANGED IN A GRID PATTERN W/ REINFORCED JUNCTION NODES. NET TO SPAN BETWEEN TIMBER OR STEEL ANCHORING MEMBERS AT TOP & BOTTOM OF SLOPE; PROVIDE CONTINUOUS TOP BEAM OR POSTS W/ CONCEALED HARDWARE CONNECTIONS. BOTTOM EDGE TO BE ANCHORED TO GROUND BEAM, DEADMAN, OR CONCRETE FOOTING CONCEALED BELOW FINISHED GRADE. COORDINATE NET SIZE, SLOPE ANGLE, & ANCHORAGE LOCATIONS W/ FINAL GRADING TO ENSURE FULL TENSION, SAFE CLEARANCES, & SMOOTH TRANSITIONS AT TOP & BOTTOM OF CLIMB. NO BOULDERS OR STONES PRESENT UNDERNEATH THE ROPES.
- EMBANKMENT CLIMBING ROPE, KOMPAN HILL CLIMB ROPE BASIS OF DESIGN. PROVIDE SINGLE INCLINED CLIMBING ROPE ON EMBANKMENT W/ INTEGRATED HAND/FOOT HOLDS AT REGULAR INTERVALS. ROPE TO BE HEAVY-DUTY, UV-RESISTANT SYNTHETIC FIBER W/ MOLDED OR TIMBER CLIMBING ELEMENTS SECURELY FIXED TO ROPE. TOP OF ROPE TO BE ATTACHED TO ROUND TIMBER POST OR BEAM W/ CONCEALED STEEL HARDWARE; BOTTOM OF ROPE TO BE ANCHORED BELOW GRADE USING EARTH ANCHOR, CONCRETE FOOTING, OR EQUIVALENT CONCEALED ANCHORAGE. COORDINATE ROPE LENGTH, SLOPE, & ATTACHMENT POINTS W/ GRADING TO MAINTAIN CONSISTENT TENSION, SAFE FALL ZONES, & CONSTRUCTABLE INSTALLATION.
- 12" THICK ENGINEERED WOOD FIBER (EWF) MULCH CERTIFIED FOR PLAYGROUND USE. MULCH TO BE PROVIDED BY CERTIFIED PLAYGROUND MULCH VENDOR. CONSULT OWNER FOR VENDOR RECOMMENDATIONS. PROVIDE GEOTEXTILE UNDER MULCH. SEE SPECIFICATIONS ON SHEET L502. DO NOT PROVIDE MULCH WITHIN DRIP LINE OF EXISTING TREES. TOP OF MULCH REFLECTS FINISHED GRADE AS SHOWN ON THE CIVIL SHEETS. WHERE TRANSITIONING TO ADJACENT SURFACES, SLOPE SUBGRADE UP AT A 1:1 STARTING AT THE LIMITS OF THE EWF AS SHOWN ON THE PLANS. SEE LEGEND.
  - TOTAL QUANTITY OF EWF MULCH COVERAGE REQUIRED = 3,800 SF.
  - 3" THICK DOUBLE SHREDDED HARDWOOD (DSH) MULCH, APPLIED ABOVE FINISHED GRADE ON THE PLAYGROUND AND BENEATH ALL TREES AND SHRUBS AS SHOWN ON THE CIVIL SHEETS. DO NOT PROVIDE GEOTEXTILE FABRIC BENEATH DOUBLE SHREDDED HARDWOOD MULCH. KEY NOTES ARE NOT PROVIDED FOR ALL MULCH LOCATIONS; SEE LEGEND FOR ALL MULCH LOCATIONS. SEE LANDSCAPE DETAIL SHEET FOR MULCHING BENEATH TREES AND SHRUBS. PROVIDE MULCH BENEATH ADJACENT TREES AND SHRUBS TO CREATE A CONTINUOUS MULCH BED AS SHOWN ON THE LANDSCAPE PLANS. AVOID HYDROSEEDING IN MULCH BEDS IN ORDER TO REDUCE COMPETITION FOR NUTRIENTS DURING PLANT ESTABLISHMENT. AVOID PLACING MULCH DIRECTLY AGAINST TRUNKS AND BASES OF SHRUBS.
    - TOTAL QUANTITY OF DSH MULCH COVERAGE REQUIRED = 12,000 SF.
  - FIELD STONE BOULDERS AT BIOSWALE. DO NOT OBSTRUCT BIOSWALE CENTER LINE (2'-3" WIDTH). SEE SPECIFICATIONS ON SHEET L-502. SEE CIVIL SHEETS FOR GRADING OF BIOSWALE.
    - PROVIDE 15-20 BOULDERS SIZED 200-500 POUNDS IN APPROXIMATE LOCATIONS & GROUPING SHOWN.
    - PROVIDE 35-40 BOULDERS SIZED 300-1000 POUNDS IN APPROXIMATE LOCATIONS & GROUPINGS SHOWN. PROVIDE AT LEAST 10 BOULDER WEIGHING AT LEAST 750 POUNDS.
  - GRAY RIVER ROCK COBBLES, SIZED 4"-8", 12" DEPTH. COBBLES SHALL BE PLACED WITHIN 1' OF BOTH SIDES OF THE CENTERLINE OF SWALE W/ VARIANCE SIMILAR TO AS SHOWN ON THE PLANS. PROVIDE MIRAFI N140 GEOTEXTILE BENEATH COBBLES, OVERLAPPING EDGES 12". TOP OF COBBLES SHALL REFLECT PROPOSED GRADE AS SHOWN ON THE CIVIL DRAWINGS.
    - TOTAL QUANTITY OF COBBLE COVERAGE REQUIRED = 150 SF
  - FIELD STONE GARDEN PATH STONES, 4" THICK, 9-12 SF, TOP 1" ABOVE FINISHED GRADE. SURFACE SHALL BE SMOOTH & FREE OF ABRUPT VARIATIONS GREATER THAN 1/8".
    - PROVIDE 7-10 UNITS IN BIOSWALE & PLAYGROUND AREA TOTAL AS SHOWN.
  - OVERSIZED FIELD STONE STEPS/LANDINGS, 8-12" THICK, AT LEAST 2" EMBEDDED IN FINISHED GRADE AS REQUIRED TO PROVIDE CONSISTENT STEPS 4-6" IN HEIGHT & VARYING NO MORE THAN 1" ACROSS ALL STEPS. SURFACE SHALL BE SMOOTH & FREE OF ABRUPT VARIATIONS GREATER THAN 1/8".
    - PROVIDE 8-10 UNITS AT OUTDOOR CLASSROOM AS SHOWN.
  - FIELD STONE UNITS SIZED APPROXIMATELY 3'X3'X AT LEAST 5' IN LENGTH ALIGNED PARALLEL TO SLOPE & BACKFILLED TO WITHIN 4" OF TOP OF STONES. FACE OF STONES SHALL ABUT ONE ANOTHER W/ GAPS NOT EXCEEDING 2" AT STONE FACE. EMBED STONES 4-6" INTO FINISHED GRADE. SEE DETAIL ON SHEET L-501.
    - PROVIDE UNITS AS REQUIRED TO CONSTRUCT TWO RETAINING WALLS THAT ARE APPROXIMATELY 40 LF EACH (80 LF TOTAL).
  - PROVIDE OUTDOOR BENCH W/ BACK. SEE BASIS OF DESIGN ON SHEET L-501. FINAL LOCATION TO BE APPROVED BY THE OWNER. PROVIDE GRAY RIVER ROCK, UNITS SIZED 2-4" AT A 3-4" DEPTH OVER MIRAFI N140 GEOTEXTILE BENEATH BENCHES. TOP OF STONE SHALL BE FLUSH W/ WALKS & ADJACENT GRADE. PROVIDE BROWN METAL EDGING AROUND RIVER ROCK, EMBEDDED INTO GRADE W/ TOP 1" ABOVE FINISHED GRADE.
    - PROVIDE SEVEN BENCHES
  - PROVIDE BOARDWALK. REFER TO CIVIL, ARCHITECTURAL, & STRUCTURAL DRAWINGS FOR BOARDWALK DESIGN.
    - 2" WETLAND PLUG MIX. SEE LANDSCAPE DETAIL SHEETS FOR SPECIES, SPACING, ETC. LOCATIONS SHOWN ARE APPROXIMATE AND SHALL BE FINALIZED TO REFLECT FINISHED GRADING. ALL LOCATIONS ARE NOT NOTED WITH KEY NOTES ON THE PLAN. SEE LEGEND AND PLANS FOR ALL LOCATIONS. SEE SHEET L-502 FOR WETLAND PLANTING/COIR MATTING SPECIFICATIONS.
      - INCLUDE 800 SF OF WETLAND PLUGS IN BASE BID.
    - POLLINATOR SEED MIX. SEE LANDSCAPE DETAIL SHEETS FOR SPECIES, SPACING, ETC. ALL LOCATIONS ARE NOT NOTED WITH KEY NOTES ON THE PLAN. SEE LEGEND AND PLANS FOR ALL LOCATIONS.
      - TOTAL AREA OF POLLINATOR MIX REQUIRED = 9000 SF.
    - BIODIVERSE POLYCULTURE SEED MIX. SEE LANDSCAPE DETAIL SHEETS FOR SPECIES, SPACING, ETC. ALL LOCATIONS ARE NOT NOTED WITH KEY NOTES ON THE PLAN. SEE LEGEND AND PLANS FOR ALL LOCATIONS.
      - TOTAL AREA OF BIODIVERSE POLYCULTURE MIX REQUIRED = 20,000 SF.
    - TURF GRASS SEED MIX AT OUTDOOR CLASSROOM. SEE SPECIFICATIONS.
      - TOTAL AREA OF TURF GRASS REQUIRED = 800 SF.

ADDENDUM #1

EXISTING TREES TO REMAIN IN THIS AREA ARE NOT SHOWN ON THE PLANS. SEE CIVIL SHEETS FOR TREES TO REMAIN. SHIFT LOCATIONS OF NEW PLANTINGS AS REQUIRED TO ACCOMMODATE EXISTING TREES. PROTECT EXISTING TREES WITH TREE PROTECTION FENCE AROUND DRIP LINE FOR THE DURATION OF CONSTRUCTION



### GENERAL LANDSCAPE NOTES

- LANDSCAPE LEGEND IS PROVIDED ON SHEET L-102. PLANTING SCHEDULE, & LANDSCAPING NOTES ARE LOCATED ON SHEET L-501 & L-502.
- ENLARGED VIEWS ARE FOUND ON THE SHEET NUMBER INDICATED WITHIN THE OVERALL LANDSCAPE PLAN.
- CONTOURS SHOWN ON THE LANDSCAPE PLANS ARE APPROXIMATE & SHALL NOT BE REFERENCED FOR GRADING. REFER TO CIVIL SHEETS FOR GRADING PLAN.
- REFER TO CIVIL SHEETS FOR HARDSCAPE DESIGN & PLACEMENT & BIKE RACK LOCATION & SPECIFICATION.
- REFER TO ARCHITECTURAL PLANS FOR WASTE RECEPTACLE INFORMATION.
- LOCATION & CONFIGURATION OF WET POND & BIOSWALE ARE APPROXIMATE & SHALL BE REFERENCED FOR GENERAL LAYOUT OF PLANT MATERIALS & STONES ONLY. REFER TO CIVIL SHEETS FOR BIOSWALE & POND GRADING.



100% FOR CONSTRUCTION

525 VINE STREET  
SUITE 1300  
CINCINNATI, OHIO 45202



Clermont County Park District  
Grailville Preserve & Park - Phase 1  
Miami Township  
Clermont County, Ohio

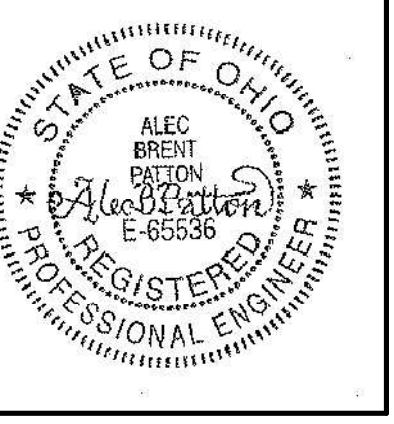
NO.	REVISIONS DESCRIPTION	DATE

JOB NO:	PR63329
DATE:	04/02/2026
DESIGNED BY:	DRC
DRAWN BY:	CLE
CHECKED BY:	DRC
APPROVED BY:	DRC
SCALE:	NOTED

## OVERALL LANDSCAPE PLAN

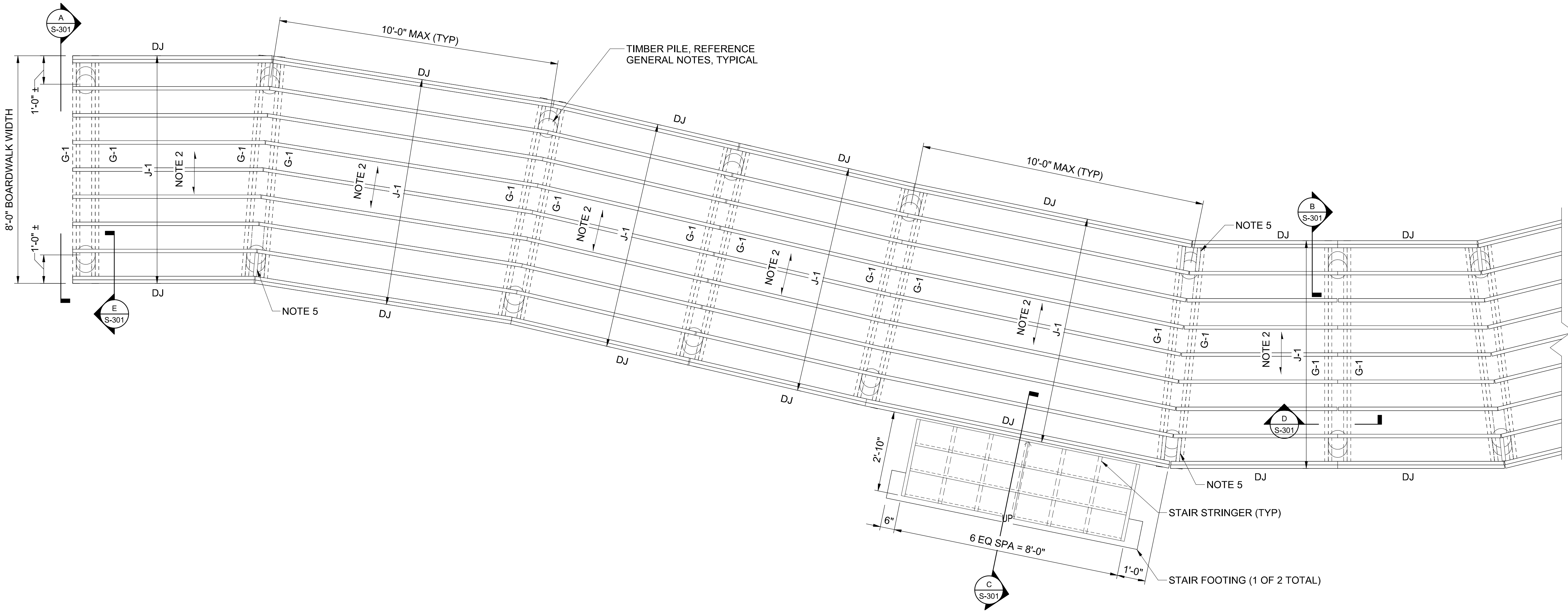
SHEET IDENTIFICATION  
**L-101**

SHEET: 12 OF 68



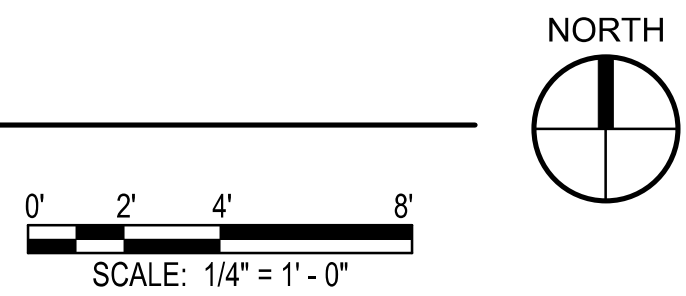
**B&N**  
BURGESS & NIPLE  
330 RUSH ALLEY  
SUITE 700  
COLUMBUS, OH 43215

CLERMONT COUNTY PARK DISTRICT  
GRAILVILLE PRESERVE & PARK  
MIAMI TOWNSHIP CLERMONT COUNTY, OHIO



**BOARDWALK PARTIAL SITE PLAN**

SCALE: 1/2" = 1'-0"



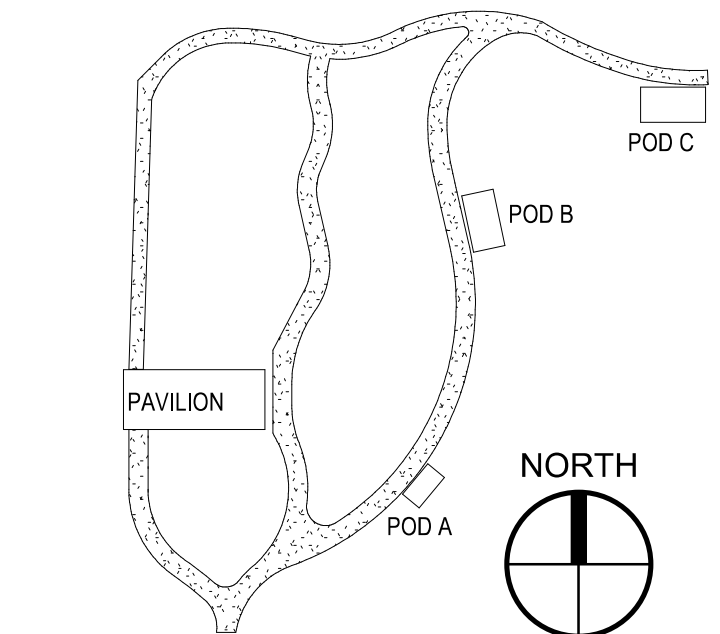
**BOARDWALK FRAMING NOTES:**

1. REFERENCE CIVIL AND ARCHITECTURAL DRAWINGS FOR FULL LAYOUT, DIMENSIONS, ELEVATIONS, AND OTHER DETAILS NOT INDICATED. FRAMING FOR REMAINDER OF BOARDWALK IS SIMILAR.
2. COMPOSITE 2x6 FLOOR DECKING. FASTEN TO EACH JOIST USING PRE-DRILLED HOLES PER MANUFACTURERS INSTRUCTIONS (USING STAINLESS STEEL FASTENERS). LAY OUT DECK BOARDS WITH GAPS PER THE MANUFACTURERS RECOMMENDATIONS (1/8" MIN). JOISTS SPACED AT 12" OC MAX
3. SCREWS ARE STAINLESS STEEL (SS) WITH BEVELED HEADS (FLUSH WITH DECK SURFACE) INTO PRE-DRILLED HOLES TO PREVENT SPLITTING. FASTEN DECKING USING TWO (2) SCREWS AT EACH JOIST AND BLOCKING UNLESS OTHERWISE INDICTED BY THE DECKING MANUFACTURER. REFERENCE GENERAL NOTES FOR ALTERNATE OF SS.
4. **BID ALTERNATE: FLOOR DECKING, PT 2x6 LAID FLAT, FASTEN TO EACH JOIST USING (2) #8 SS SCREWS W/ 1" EMBED INTO PRE-DRILLED HOLES TO PREVENT SPLITTING. LAYOUT DECK BOARDS WITH 1/8" MIN AND 1/4" MAX GAPS BETWEEN BOARDS.**
5. INSTALL BLOCKING (MATCH JOIST SIZE/DEPTH) BETWEEN JOISTS AT BOARDWALK SKEWS TO SUPPORT FLOOR DECKING, PARTIALLY SHOWN FOR CLARITY.
6. BLOCKING AT RAILING POST LOCATIONS NOT SHOWN. COORDINATE LOCATION OF BLOCKING WITH APPROVED RAILING SUBMITTAL.

**BOARDWALK FRAMING LEGEND:**

- G-1 PT (2) 2x12 GIRDER
- J-1 PT 2x12 JOISTS AT 12" OC MAX
- DJ DOUBLE JOIST

**BID ALTERNATES  
REMOVED FROM  
CONSIDERATION**



KEY PLAN

**ADDENDUM #1**

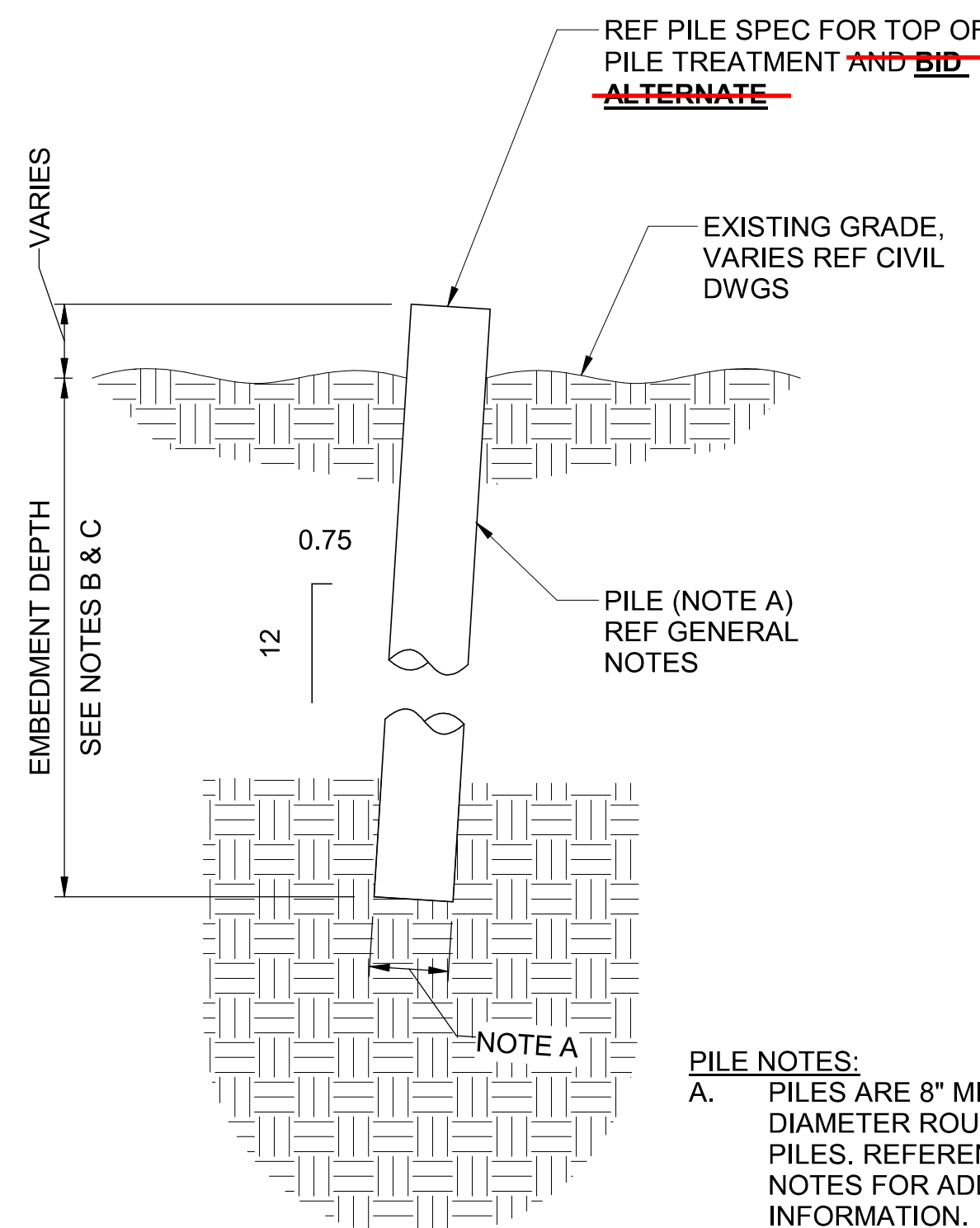
NO.	REVISIONS DESCRIPTION	DATE

JOB NO:	PR63329
DATE:	04/02/2026
DESIGNED BY:	ABP
DRAWN BY:	TRK
CHECKED BY:	ABP
APPROVED BY:	ABP
SCALE:	As indicated

**BOARDWALK PARTIAL SITE PLAN**

SHEET IDENTIFICATION  
**S-202**

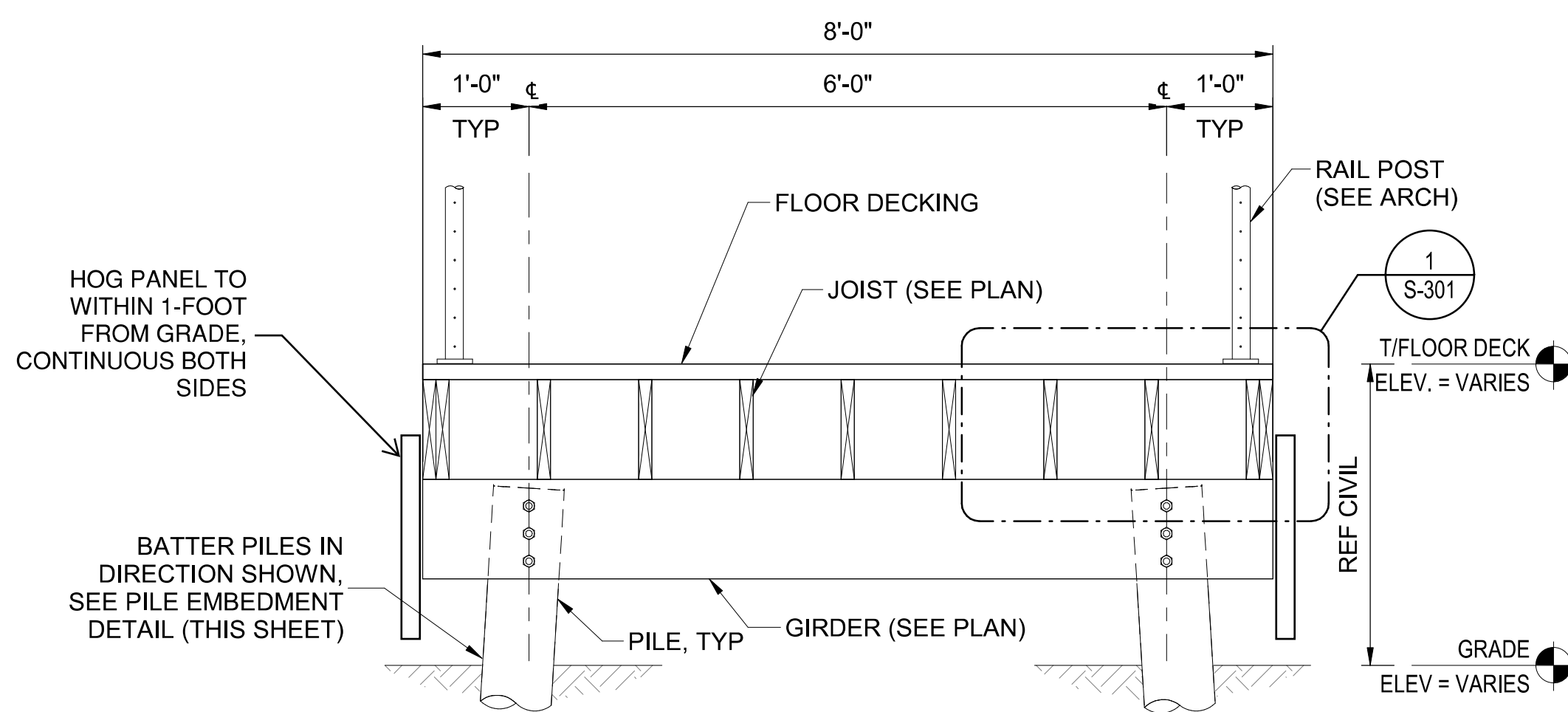
4/1/2026 1:25:25 PM C:\Users\kangas\Documents\PR63329 - Grailville Park STRUC (CENTRAL)\_Tyler.Kangas.rvt



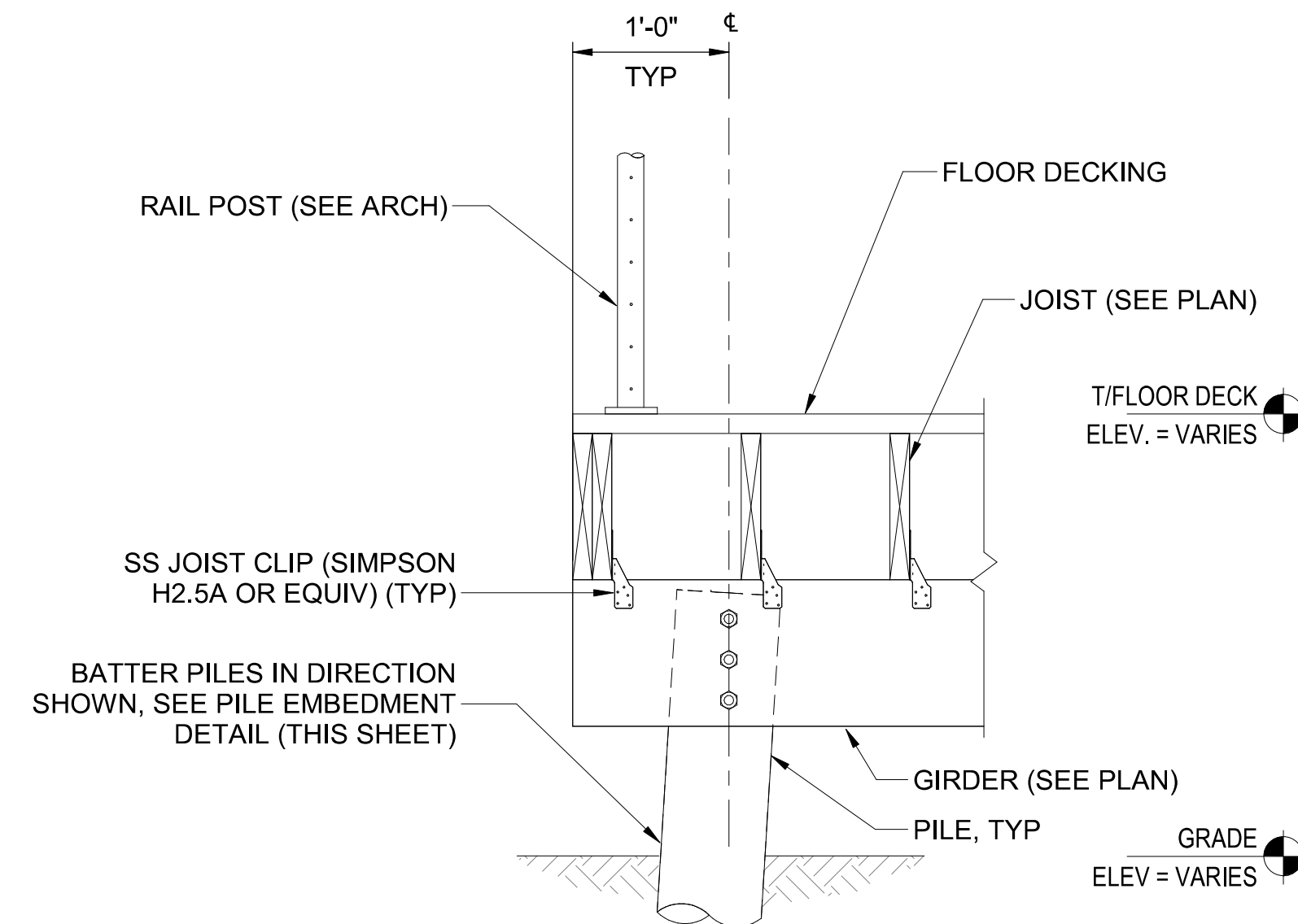
**PILE EMBEDMENT DETAIL**

**PILE NOTES:**  
 A. PILES ARE 8" MINIMUM TIP DIAMETER ROUND TIMBER PILES. REFERENCE GENERAL NOTES FOR ADDITIONAL INFORMATION.

**BID ALTERNATES REMOVED FROM CONSIDERATION**

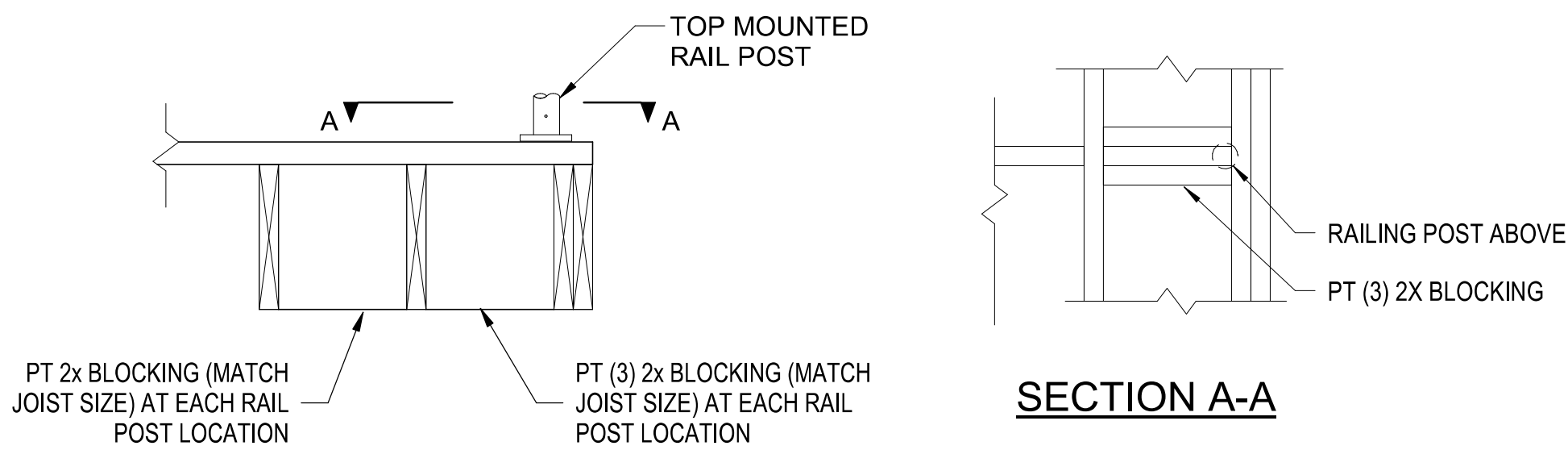


**A SECTION**  
 S-202 SCALE: 3/4" = 1'-0"



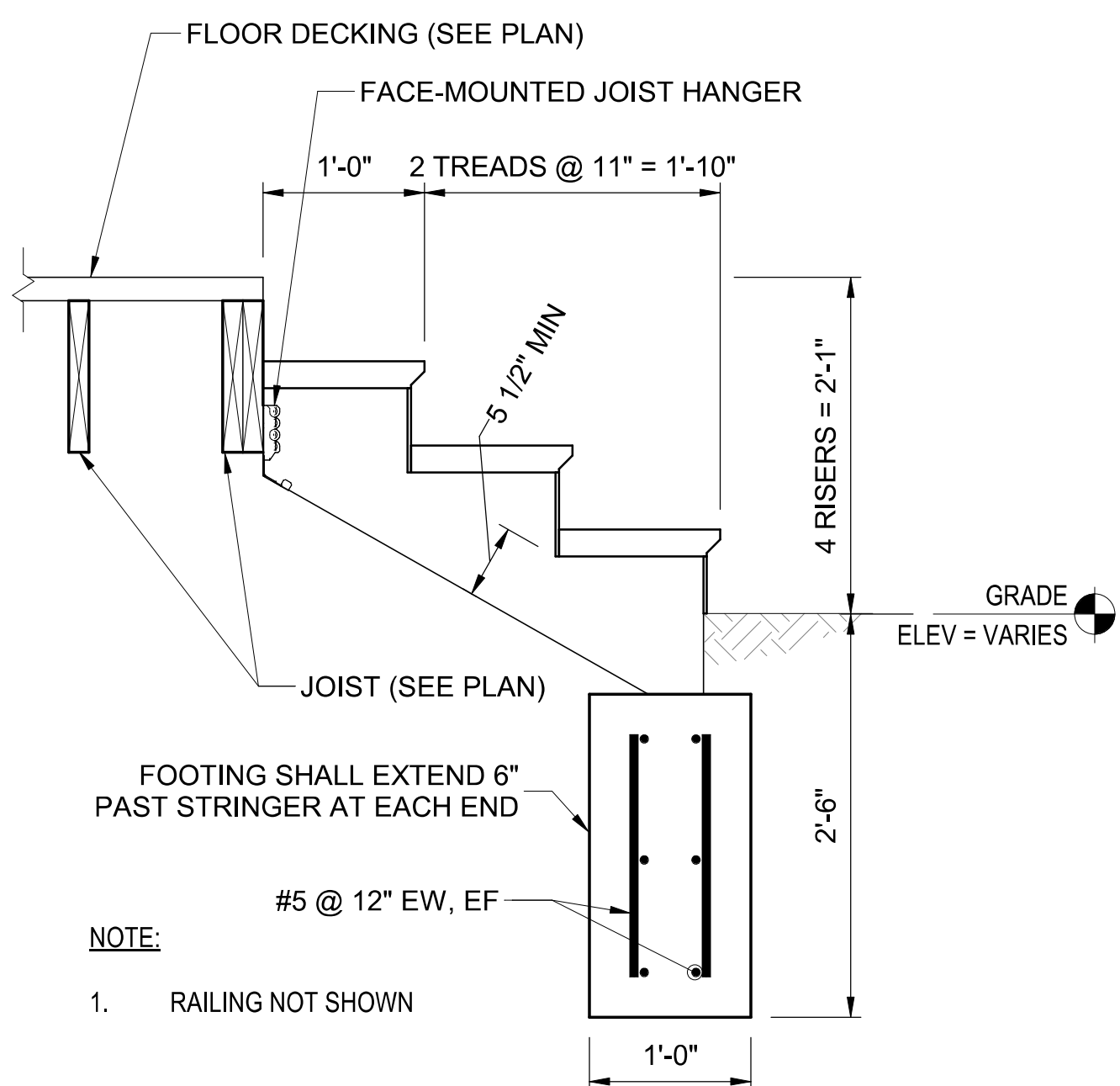
**B SECTION**  
 S-202 SCALE: 1" = 1'-0"

**NOTE:**  
 1. SEE ARCHITECTURAL FOR GUARDRAIL AND HAND RAIL DETAILS

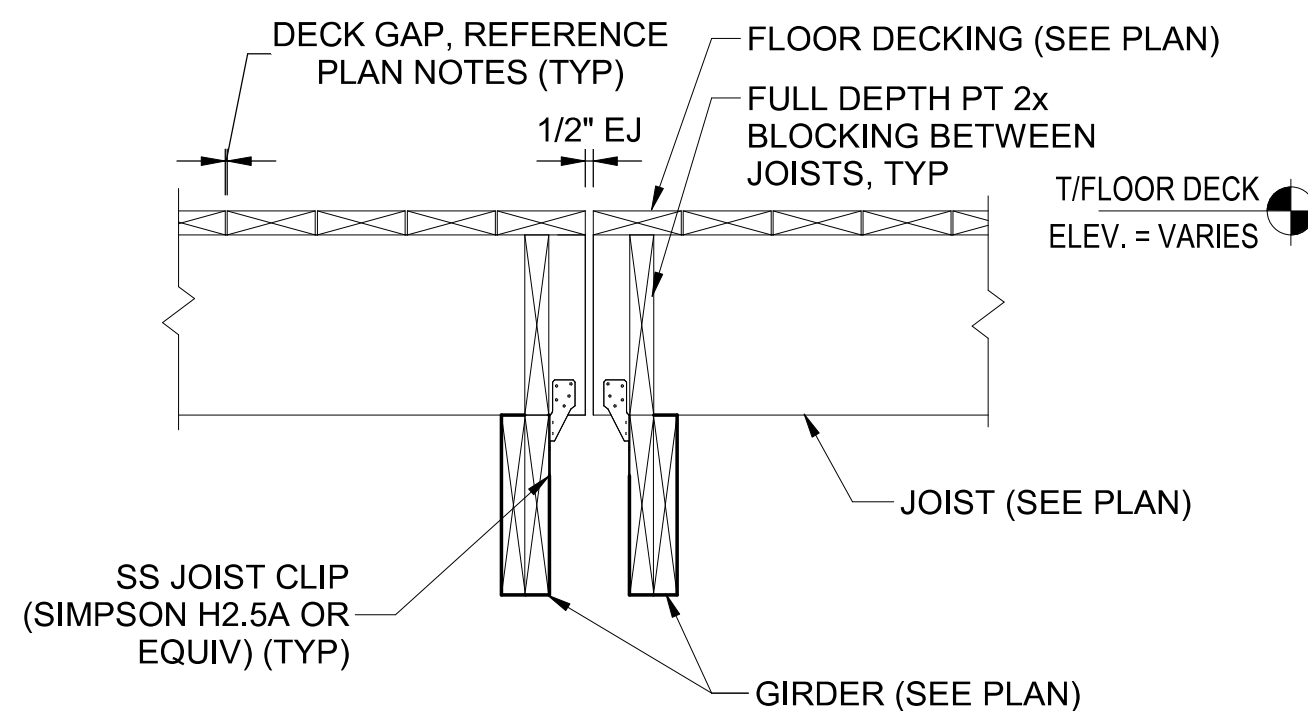


**SECTION A-A**

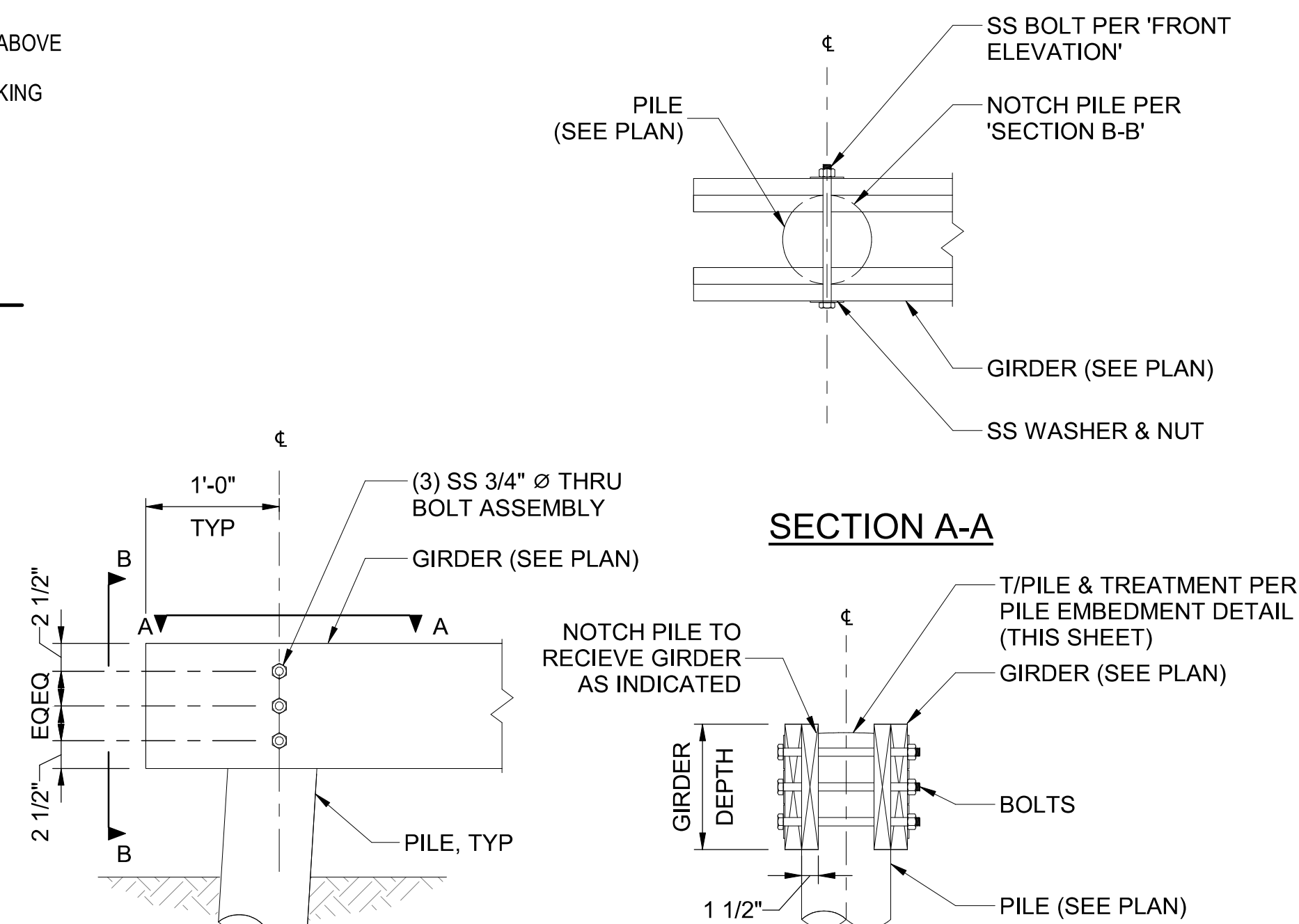
**1 BLOCKING DETAIL AT RAILING POST**  
 S-202 SCALE: 1" = 1'-0"



**C SECTION**  
 S-202 SCALE: 1" = 1'-0"



**D SECTION**  
 S-202 SCALE: 1" = 1'-0"



**FRONT ELEVATION**

**SECTION B-B**

**E GIRDER TO PILE CONNECTION**  
 S-202 SCALE: 1" = 1'-0"



330 RUSH ALLEY  
 SUITE 700  
 COLUMBUS, OH 43215  
**B&N**  
 BURGESS & NIPLE

CLERMONT COUNTY PARK DISTRICT  
 GRAILVILLE PRESERVE & PARK  
 MIAMI TOWNSHIP CLERMONT COUNTY, OHIO

NO.	REVISIONS DESCRIPTION	DATE

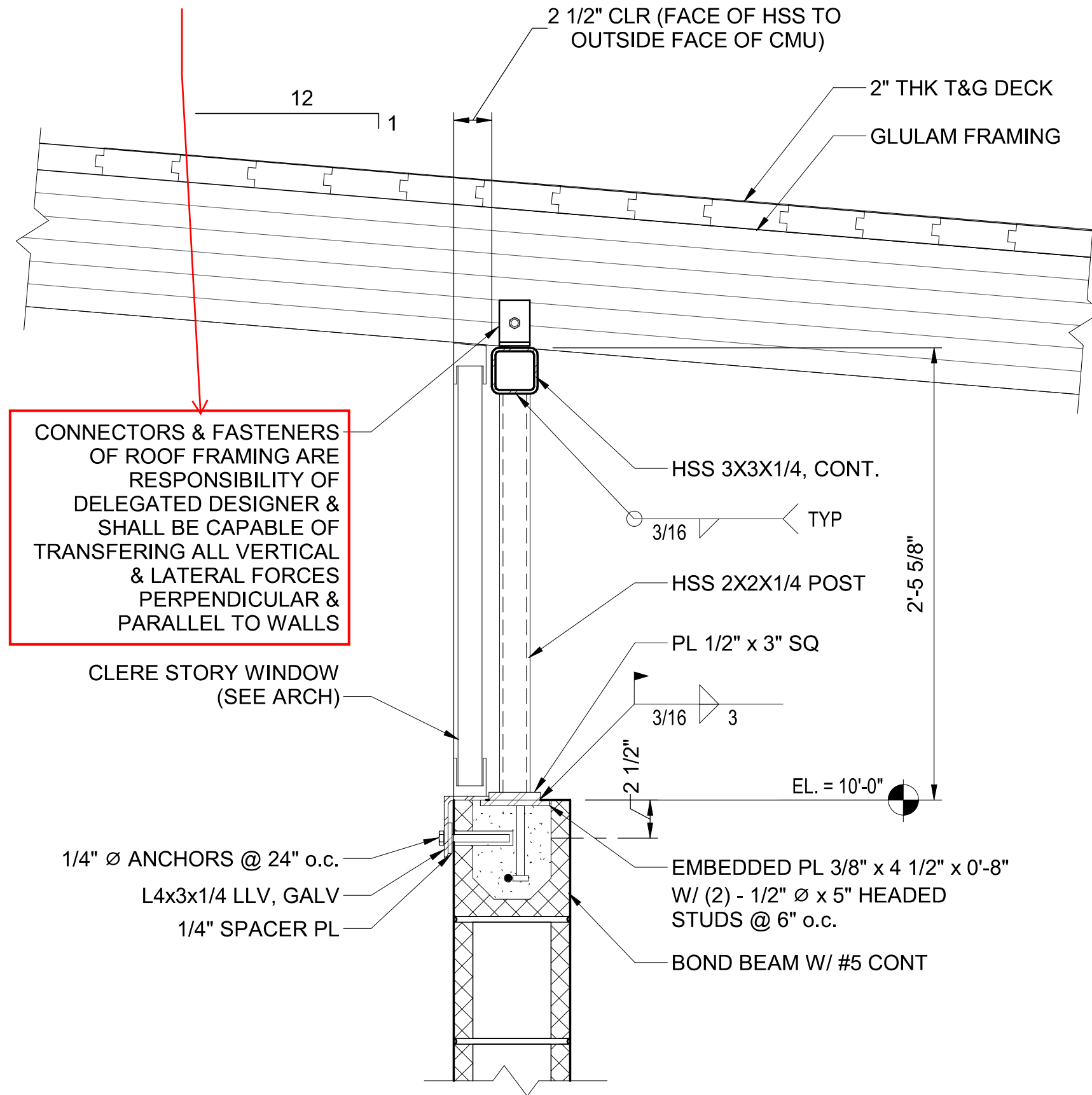
JOB NO:	PR63329
DATE:	04/02/2026
DESIGNED BY:	ABP
DRAWN BY:	TRK
CHECKED BY:	ABP
APPROVED BY:	ABP
SCALE:	As indicated

**BOARDWALK SECTIONS & DETAILS**

SHEET IDENTIFICATION  
**S-301**  
 SHEET 29 OF 68

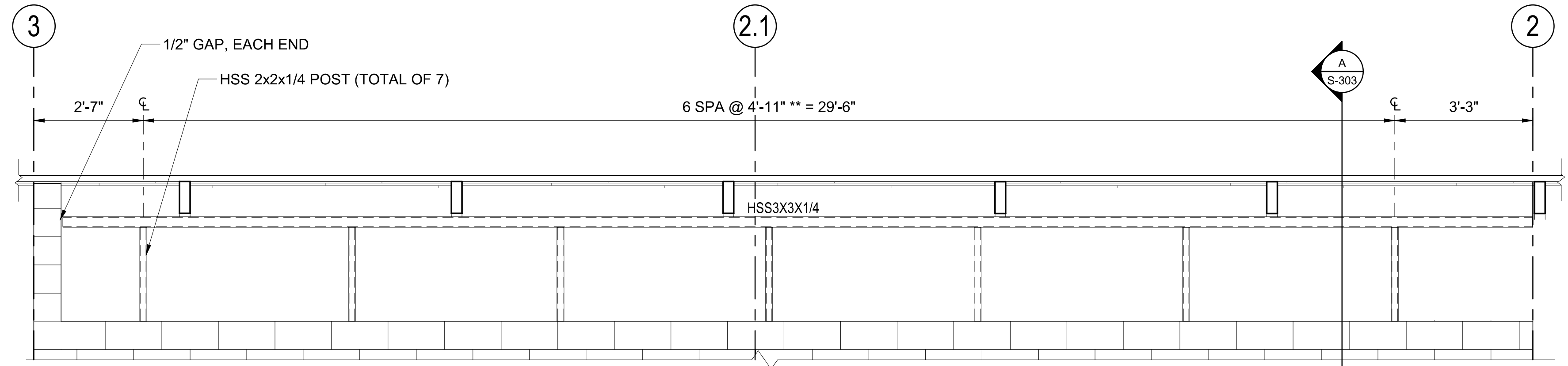
**ADDENDUM #1**

For the purposes of bidding, assume each beam is fastened to the supporting steel framing with a pair of L6x3 1/2x5/16 angles, LLV, with (2)-5/8" diameter thru-bolts. Finalized delegated design to be performed by glulam manufacturer or qualified representative.



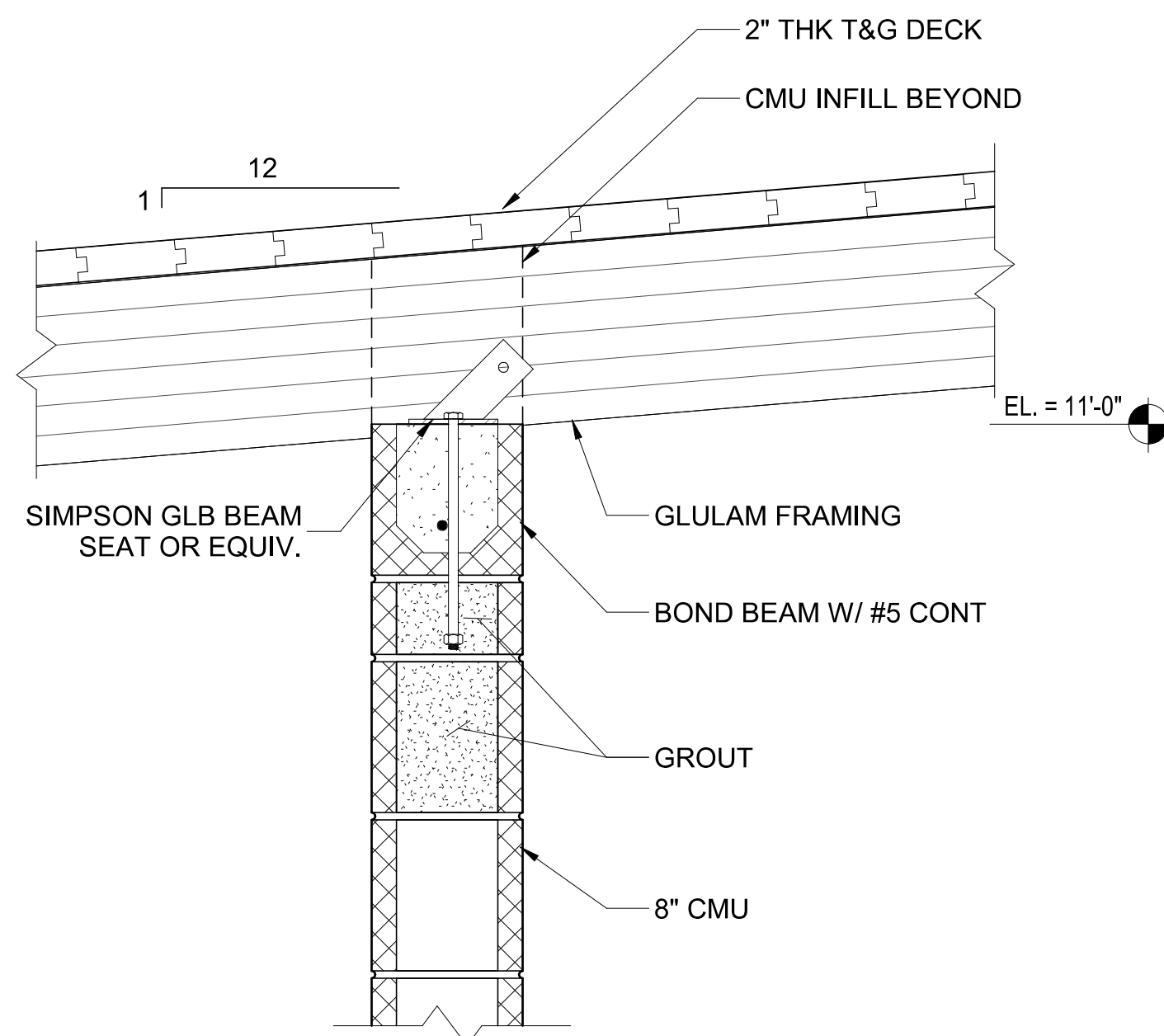
CONNECTORS & FASTENERS OF ROOF FRAMING ARE RESPONSIBILITY OF DELEGATED DESIGNER & SHALL BE CAPABLE OF TRANSFERRING ALL VERTICAL & LATERAL FORCES PERPENDICULAR & PARALLEL TO WALLS

**A**  
SECTION  
SCALE: 1 1/2" = 1'-0"

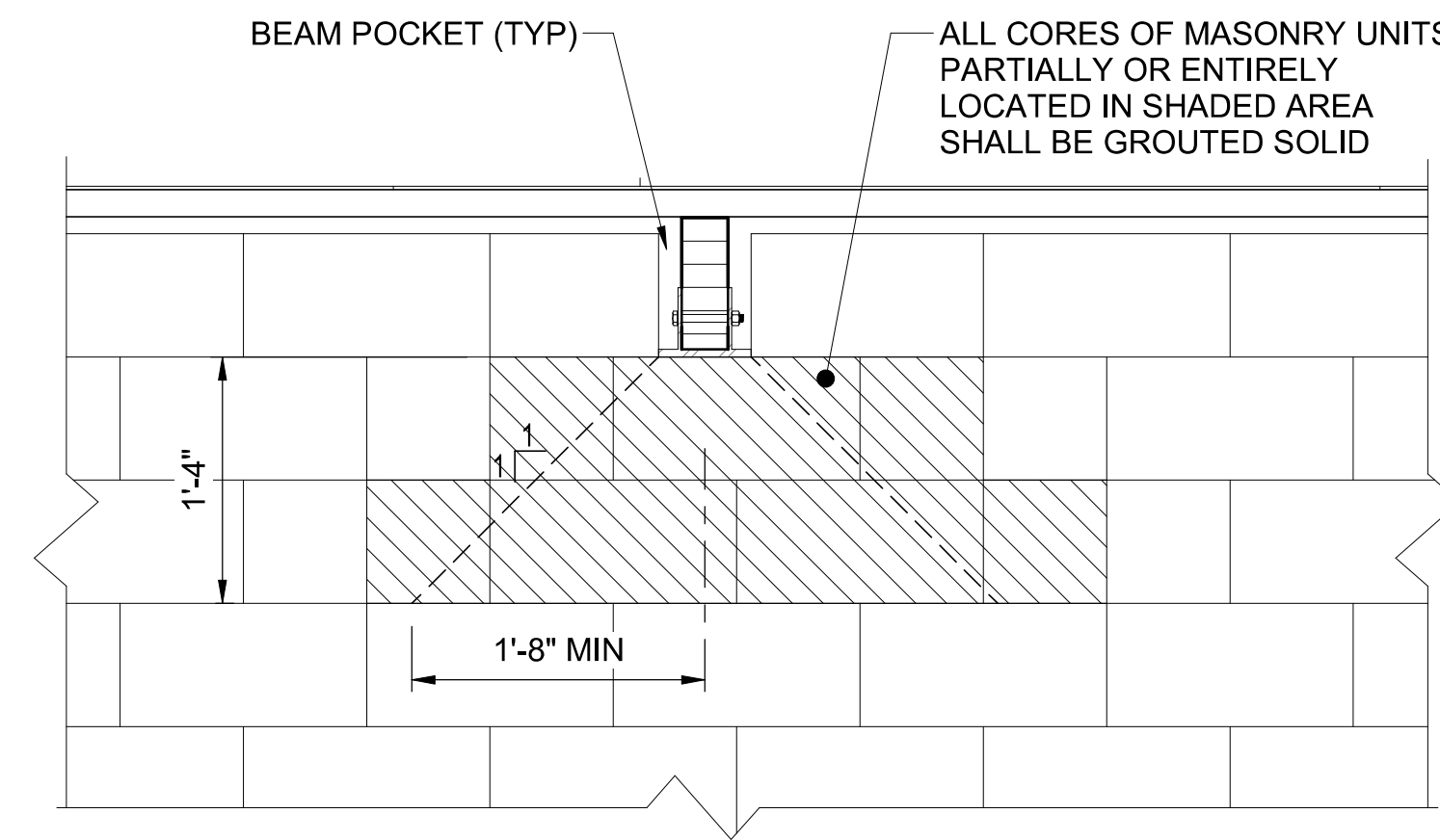


\*\* COORDINATE FINAL DIMENSIONS WITH APPROVED FIBERGLASS PANEL WINDOW SUBMITTAL BEFORE FABRICATION

**1**  
ELEVATION  
SCALE: 1/2" = 1'-0"



**B**  
SECTION  
SCALE: 1 1/2" = 1'-0"



**2**  
TYPICAL BEAM EBARING DETAIL AT MASONRY WALL  
SCALE: 1" = 1'-0"



330 RUSH ALLEY  
SUITE 700  
COLUMBUS, OH 43215  
**B&N**  
BURGESS & NIPLÉ

CLERMONT COUNTY PARK DISTRICT  
GRAILVILLE PRESERVE & PARK  
MIAMI TOWNSHIP CLERMONT COUNTY, OHIO

NO.	REVISIONS DESCRIPTION	DATE

JOB NO:	PR63329
DATE:	04/02/2026
DESIGNED BY:	ABP
DRAWN BY:	TRK
CHECKED BY:	ABP
APPROVED BY:	ABP
SCALE:	As indicated

FRAMING SECTIONS  
I

SHEET IDENTIFICATION  
**S-303**

SHEET 31 OF 68

ADDENDUM #1

**ELECTRIC WATER HEATER SCHEDULE**

TAG	TYPE	FUEL	TANK CAPACITY (GAL.)	INPUT (KW)	TEMP RISE (DEG F)	RECOVERY (GPH)	ELECTRICAL DATA			BASIS OF DESIGN		REMARKS
							VOLTS	PHASE	FLA	MANUFACTURER	MODEL	
EWH-1	TANK	ELECTRIC	28	4.5	90	20	240V	1	21.6	AO SMITH	DEL-30	SEE NOTES

**PLUMBING FIXTURE AND CONNECTION SCHEDULE**

TAG	TYPE	DESCRIPTION	COLD	HOT	WASTE	VENT	REMARKS
LAV	LAVATORY	SLOAN ELC-81000 OR EQUAL SINGLE STATION LAVATORY. WHITE SPARKLE, SINGLE CENTERED FAUCET HOLE, VANDAL RESISTANT.	-	-	-	-	PROVIDE CARRIER. ADA COMPLIANT.
	FAUCET	SLOAN EAF-200-P-ISM TOUCHLESS FAUCET WITH TEMPERATURE MIXER, CHROME PLATED DIE-CAST METAL, 0.5 GPM FLOW.	1/2"	1/2"	-	-	
	FITTINGS	MCGUIRE NO. 8902 CAST BRASS P-TRAP. MCGUIRE NO. 158WC WHEELCHAIR LAVATORY SUPPLIES WITH LOOSE KEY STRAIGHT STOP AND WALL FLANGE. HANDY SHIELD SAFETY COVERS PRO-2000 SERIES FOR TRAP AND SUPPLIES. OR EQUAL.	-	-	1 1/2"	2"	
WC	HANDICAP WATER CLOSET	AMERICAN STANDARD "AFWALL" MODEL NO.3351.101 OR EQUAL WALL-HUNG WATER CLOSET. VITREOUS CHINA, LOW CONSUMPTION (1.6 GAL. PER FLUSH), ELONGATED BOWL, DIRECT FED SIPHON JET ACTION, AND 1 1/2" INLET SPUD.	-	-	4"	2"	PROVIDE CARRIER. MOUNT TOP 17" TO 19" AFF. ADA COMPLIANT.
	FLUSH VALVE	SLOAN ROYAL NO. 111 ESS HARD-WIRED TOUCHLESS FLUSHMETER, LOW CONSUMPTION 1.6 GAL. PER FLUSH CYCLE MAXIMUM, EXPOSED MOUNTING, DIAPHRAGM TYPE, CHROME PLATED, NON-HOLD-OPEN HANDLE, 1" IPS SCREWDRIVER ANGLE STOP, VACUUM BREAKER FLUSH CONNECTION, WALL AND SPUD FLANGES.	1"	-	-	-	
	SEAT	OLSONITE NO. 95 OR EQUAL OPEN FRONT SEAT LESS COVER, WHITE CARRIER FITTING	-	-	-	-	
BFP	BACKFLOW PREVENTER	DOMESTIC COLD WATER ASSE 1013 LISTED REDUCED PRESSURE PRINCIPLE BACKFLOW PREVENTER. WATTS 4000B. 175 PSI MAX WORKING PRESSURE.	1 1/2"	-	-	-	
WHA	WATER HAMMER ARRESTOR	J.R. SMITH MODEL 5000 SERIES HYDROTROL CERTIFIED TO STANDARD P.D.I. WH-201	-	-	-	-	REFER TO PLAN FOR SIZING
WCO	WALL CLEANOUT	ZURN Z-1445 OR EQUAL WALL CLEANOUT TEE WITH DURACOATED CAS IRON BODY WITH GAS AND WATER TIGHT ABS TAPERED THREAD PLUG. STAINLESS STEEL COVER WITH SCREW.	-	-	-	-	REFER TO PLAN FOR SIZING
GCO	GROUND CLEANOUT	ZURN MODEL Z-1449, CAST IRON BODY, WITH GAS AND WATERTIGHT BRASS COUNTERSUNK PLUG.	-	-	-	-	REFER TO PLAN FOR SIZING
FD	FLOOR DRAIN	ZURN NO. 415 OR EQUAL CAST IRON BODY FLOOR DRAIN, 4" OUTLET, 6" DIA. ADJUSTABLE NICKEL BRONZE TOP WITH FLASHING COLLAR, SEDIMENT BASKET, AND ZURN Z-1000 OR EQUAL P-TRAP WITH ELASTOMERIC TRAP SEAL.	-	-	3"	2"	
HB	HOSE BIBB	WOODFORD MFG. MODEL 101 MILD CLIMATE ANTI-SIPHON WALL FAUCET; ASSE 1019 (TYPE C) LISTED; INTEGRAL ANTI-SIPHON PROTECTION WITH PATENTED CHECK AND ATMOSPHERIC VENT; 3/4" MALE HOSE THREAD NOZZLE; BRASS/BRONZE BODY WITH SOLID BRASS VALVE STEM AND WHEEL HANDLE; INLET CONNECTION AS SCHEDULED; MAX WORKING PRESSURE 125 PSI.	3/4"	-	-	-	
WHF	WALL HYDRANT	WOODFORD MODEL 65 OR EQUAL, AUTOMATIC DRAINING, NON-FREEZE WALL HYDRANT WITH KEY OPERATION, VACUUM BREAKER BACKFLOW PREVENTER, 3/4" HOSE CONNECTION, POLISHED BRASS FINISH. PROVIDE KEY WITH EACH HYDRANT.	3/4"	-	-	-	
MS	MOP SINK	FIAT MODEL TSB-100 OR EQUAL 24"X24" WITH 12" HIGH WALLS. FAUCET BASIS OF DESIGN: AMERICAN STANDARD 8344.112 OR EQUAL WITH INTEGRAL STOPS, WALL BRACE, PAIL HOOK, AND 3/4" HOSE THREAD ON SPOUT.	3/4"	3/4"	2"	-	

**ADDENDUM 1**

**PLUMBING FIXTURE AND CONNECTION SCHEDULE**

TAG	TYPE	DESCRIPTION	COLD	HOT	GAS	WASTE	VENT	REMARKS
DF-1	OUTDOOR BOTTLE FILLER	GLOBAL INDUSTRIAL MODEL 270313 OR EQUAL SINGLE DISPENSING, OUTDOOR, WALL-MOUNTED, VANDAL RESISTANT, BLACK FINISH, BOTTLE FILLING STATION.	3/8"	-	-	1 1/2"	1 1/2"	
	OUTDOOR DRINKING FOUNTAIN	GLOBAL INDUSTRIAL MODEL 761224 OR EQUAL SINGLE DISPENSING, OUTDOOR, WALL-MOUNTED, VANDAL RESISTANT, BLACK FINISH, DRINKING FOUNTAIN.	3/8"	-	-	1 1/2"	1 1/2"	

330 RUSH ALLEY  
SUITE 700  
COLUMBUS, OH 43215

**B&N**  
BURGES & NIPLE

CLERMONT COUNTY PARK DISTRICT  
GRAILVILLE PRESERVE AND PARK - PHASE 1  
MIAMI TOWNSHIP, CLERMONT COUNTY, OHIO

NO.	DESCRIPTION	DATE
1	PLUMBING REVISION	5/1/2026

JOB NO:	PR63329
DATE:	04/02/2026
DESIGNED BY:	NE
DRAWN BY:	DPJ
CHECKED BY:	PB
APPROVED BY:	NE
SCALE:	AS NOTED

**PLUMBING SCHEDULES**

SHEET IDENTIFICATION  
**P-601**

SHEET OF

5. Compression Perpendicular to Grain Top (Fc1): 740 psi.
  6. Horizontal Shear (Fv): 260 psi.
  7. Modulus of Elasticity (E): 1,800,000 psi.
  8. Lumber fabricated from old growth timber is not permitted.
- B. Steel Connections and Brackets: ASTM A36/A36M weldable quality, galvanize per ASTM A123/A123M.
- C. Steel Connections and Brackets: ASTM A666/A666M, Type 304 stainless steel.
- D. Anchor Bolts: ASTM F3125/F3125M, Type 1 heavy hex high strength bolts and ASTM A563/A563M nuts; hot-dip galvanized to meet requirements of ASTM A153/A153M, matching washers.
- E. Bearing Plate Anchors: Expansion shield and lag bolt type for anchorage to solid masonry or concrete.

#### 2.4 FIRE-RETARDANT TREATMENT (FRT)

- SECTION 2.4 REMOVED IN IT'S ENTIRETY**
- A. Manufacturers:
1. Glue Lam Manufacturers standard .
- B. Factory-treat wood members in accordance with AWPA U1 and use category indicated.
- C. Fire-Retardant Treatment: Exterior Type B, Use Category UCFB.
- D. Treat wood in locations indicated on drawings.
- E. Kiln-dry after treatment (KDAT) to maximum moisture content of 19 percent for sawn material and 15 percent for plywood.
- F. Fabrication:
1. Ripp treatment.
  2. Field cutting to length and drilling of holes in boards, lumber, and timber are permitted without additional treatment.
  3. Field cutting and drilling of holes in plywood are permitted.
- G. Label or brand FRT wood with classification mark of UL (DIR) or ITS (DIR) or other approved inspection agency, the treatment plant, name of treatment, species of wood, flame spread and smoke developed indexes, method of drying after treatment, and treating standard.
1. In addition, label Exterior Type B wood with the words: **NO INCREASE IN THE LISTED CLASSIFICATIONS WHEN SUBJECTED TO THE STANDARD RAIN TEST.** In accordance with ASTM D2898.

#### 2.5 FABRICATION

- A. Fabricate glue laminated structural members in accordance with AITC Architectural grade.
- B. Welding: Perform welding in accordance with AWS D1.1/D1.1M.
- C. Verify dimensions and site conditions prior to fabrication.
- D. Cut and fit members accurately to length to achieve tight joint fit.
- E. Fabricate member with camber built in.
- F. Do not splice or join members in locations other than those indicated without permission.
- G. Fabricate steel hardware and connections with joints neatly fitted, welded, and ground smooth.

SECTION 31 62 19  
TIMBER PILES

PART 1 GENERAL

1.01 SUBMITTALS

- A. Product Data: Provide details of collars.
- B. Shop Drawings: Indicate details and schedule of pile installation sequence.
- C. Certificate of compliance from authority having jurisdiction indicating approval.
- D. Designer's qualification statement.
- E. Installer's qualification statement.
- F. Project record documents. Indicate actual:
  - 1. Sizes, lengths, and locations of piles.
  - 2. Sequence of driving.
  - 3. Final tip and head elevations.
- G. Pile Load Test Report, including:
  - 1. Location identification.
  - 2. Description of testing equipment.
  - 3. Calibration method and recordings.

1.02 QUALITY ASSURANCE

- A. Design and select pile components under direct supervision of a Professional Structural Engineer experienced in design of this work and licensed in the State in which the Project is located.
- B. Testing Agency Qualifications: Independent firm specializing in performing testing and inspections of type specified in this section.

PART 2 PRODUCTS

2.01 MATERIALS

- A. Piles: In accordance with ASTM D25; Douglas Fir, clean peeled, one piece, non-spliced, friction type.
  - 1. Length: As indicated.
  - 2. Splices will not be permitted.
  - 3. Minimum Butt Diameter:
    - a. As indicated.
  - 4. Minimum Tip Diameter:

a. As indicated.

- B. Pile Tip: Formed and welded steel with full contact with end of wood pile, with formed and welded steel collar.

### PART 3 EXECUTION

#### 3.01 INSTALLATION

- A. Drive piles to refusal of not less than \_\_\_\_ blows to achieve \_\_\_\_ inches of additional depth.
- B. Drive piles to defined load supporting capacity.
- C. Drive piles to load supporting capacity of \_\_\_\_ lb.
- D. Protect pile head during driving. Use collar, with full bearing on pile butt, for even distribution of hammer blow.
- E. Cut off tops of piles to elevations indicated and prepare pile top to receive pile cap.
- F. Apply preservative to exposed ends of cut-off piles in accordance with AWPA M4.

#### 3.02 FIELD QUALITY CONTROL

- A. Load test the following:
- B. Perform the following tests on each test pile:
  - 1. High-strain impact test in accordance with ASTM D4945.
  - 2. Static axial compression load test in accordance with ASTM D1143/D1143M.
  - 3. Static axial tensile load test in accordance with ASTM D3689/D3689M.
  - 4. Lateral load test in accordance with ASTM D3966/D3966M.
- C. Witnessed and recorded by Professional Engineer.
- D. Compile testing information and submit pile load test report prepared by Professional Engineer.

END OF SECTION

**Bid Items:**

Quantity	Unit	Description	Unit Price (\$)	Line Price (\$)
1	LS	MOBILIZATION/DEMOBILIZATION		
1	LS	GENERAL CONDITIONS		
1	LS	SURVEY AND CONSTRUCTION STAKING		
1	LS	SWPPP AND EROSION CONTROL		
1	LS	CONCNRETE-FOUNDATIONS		
1	LS	CONCRETE-SOG		
1	LS	CONCRETE-WALKS		
1	LS	CONCRETE-CURBS		
1	LS	ASPHALT PAVEMENT		
1	LS	TRAFFIC STRIPING, SIGNAGE, MISC. ACCESSORIES		
1	LS	GRAVEL WALKS, INCLUDING ACCESSORIES		
1	LS	MASONRY -STRUCTURAL		
1	LS	MASONRY-VENEER		
1	LS	STEEL-MISC		
1	LS	ROUGH CARPENTRY		
1	LS	GLUE LAMINATED CONSTRUCTION		
1	LS	WOOD CLADDING		
1	LS	THERMAL INSULATION		
1	LS	ROOFING		
1	LS	DOORS-FRAMES -HARDWARE		
1	LS	TRANSLUCENT PANEL WINDOWS		
1	LS	PAINTING		
1	LS	TOILET ROOM ACCESSORIES		
1	LS	HVAC/MECHANICAL SYSTEM		
1	LS	PLUMBING SYSTEM, INTERIOR OF PAVILION		
1	LS	ELECTRICAL SYSTEM, INTERIOR OF PAVILION AND WORK POD B		
1	LS	EARTHWORK (DIV 31) - LESS PILES		
1	LS	SITE FURNISHINGS (DIV 32)		
1	LS	BOARDWALK INCLUDING RAILING, STEPS, AND TIMBER PILES		
1	LS	PLAY EQUIPMENT		
1	LS	PLAYSCAPE STONE		
1	LS	LANDSCAPE - MULCH/PLANTINGS/SEEDINGS		

501	LF	WATER UTILITY YARD PIPING INCLUDING FITTINGS		
10	LF	SANITARY SEWER YARD PIPE (GRAVITY INCLUDING TAP AND CLEANOUT)		
301	LF	SANITARY SEWER YARD PIPE (FORCE MAIN)		
175	LF	STORM SEWER PIPE		
4	EA	STORM SEWER STRUCTURES		
501	LF	ELECTRICAL CONDUITS, WIRE, AND STRUCTURES		
242	LF	FIBER OPTIC CONDUIT AND STRUCTURES		
1	LS	PERMITS		
1	LS	WARRANTIES		

Grand Total: \$\_\_\_\_\_